

Jenx Supine Stander

Supine standing system suitable for children standing in a supine position from around 9 months up to adults of up to 100 kg.

Robust Support and Safety

Size 3 has exclusive **numbered boards** so that set-ups can easily be recorded and recreated in a multi-user environment

De-rotational thoracic & pelvis straps/pads fasten in the centre and adjust independently from either side, enabling a mid-line position to be achieved and maintained

Split angle adjustable footplates for Size 3 and Single footboard for Size 1/2



PU boards and Support pads are flexible, easy to clean and hygienic

Size 2 & 3 knee straps are uniquely designed to avoid pressure on the patella while providing **flexible, de-rotational support**



Keeping mobile

Standing is a dynamic process requiring tiny movements of many joints alongside control of the limbs. The Jenx Supine Stander is designed to support standing by enabling the joints to be supported but mobile - this trains balance and encourages development.



Easy set up using the frame's angle gauge. Angle can be adjusted with user in the frame.



Infinite and precise angle adjustment from upright 90° through to horizontal.



Smooth and easy transfers with ability to remove support pads fully. Less carer strain!

ACCESSORIES



Choose from Lime -054 or Blue -066 colourways

Multigrip Headrest

1 Link: 5350-4601-000
2 Link: 5350-4602-000
3 Link: 5350-4603-000

Head Pad Cushion

Size 3: 5353-4602-066
1/2 & wings: 5350-4650-XXX
3 & wings: 5350-4103-XXX



Support Pads & Straps

Small: 5356-3222-XXX
Medium: 5356-3241-XXX
Large: 5353-3223-XXX
X-Large: 5353-3224-XXX

Knee Blocks & Straps

Small: 5350-1761-XXX
Medium: 5350-1762-XXX
XL 1: 5353-1765-XXX
XL 2: 5353-1766-XXX
XL 3: 5353-1767-XXX

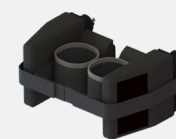


Flexion Control Knee Support

Medium: 5350-1772-XXX
XL 1: 5353-1775-XXX
XL 2: 5353-1776-XXX
XL 3: 5353-1777-XXX

Adjustable Tray

Size 1/2: 5350-7111-000
Size 3: 5353-7113-000
Elbow blocks: 5356-7351
Tray Extension Wings: 5353-7170-000



Pommel (for Size 3)

5353-1603-066
Arched Foam Pad Support behind flexed knees 5353-1775-000
Spacer 5353-2730-000

Sandals

Size 1: 5356-6081-000
Size 2: 5356-6082-000
Size 3: 5356-6083-000
Size 4: 5356-6084-000



Size	Code	Age	Max User Weight	Max User Height	Base Size	Tilt-In-Space	Chest Width	Hip Width	Knee Pad Width	Board Height to Footplate
1	5350-0001-XXX	9 mths-4 yrs	25 kg	105.5 cm	57.5x66 cm	0-80°	13-31 cm	13-31 cm	13-31 cm	50-1-07 cm
2	5350-0002-XXX	3-11 yrs	50 kg	145.5 cm	65x99.5 cm	0-80°	13-31 cm	13-31 cm	13-31 cm	90-147 cm
3	5353-0003-066	10-18yrs	100 kg	190 cm	65x99.5 cm	0-80°	22-44 cm	22-44 cm	22-44 cm	154-164 cm